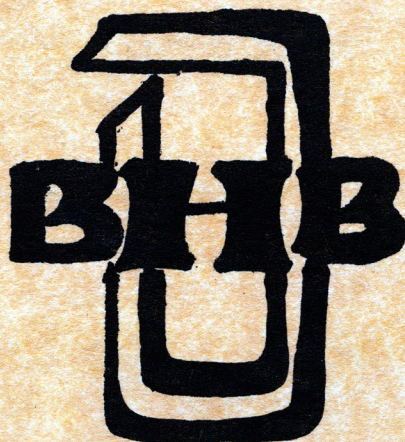


**A Study of Bridgeport Neighborhoods:
A Black Perspective, 1900 - Present**



BRIDGEPORT PUBLIC LIBRARY
HISTORICAL COLLECTIONS
925 BROAD STREET
BRIDGEPORT, CT 06604

**A PROJECT BY AFRO AMERICAN EDUCATORS ASSOC.
FUNDED BY THE CONNECTICUT HUMANITIES COUNCIL**

CONTENTS

PART I PICTURES OF INTERVIEWEES

PART II HISTORICAL BRIDGEPORT



GEORGE and LUCILLE BISH



VIOLA BRIDGEFORTH



CARRIE McADEN



GERALDINE JOHNSON



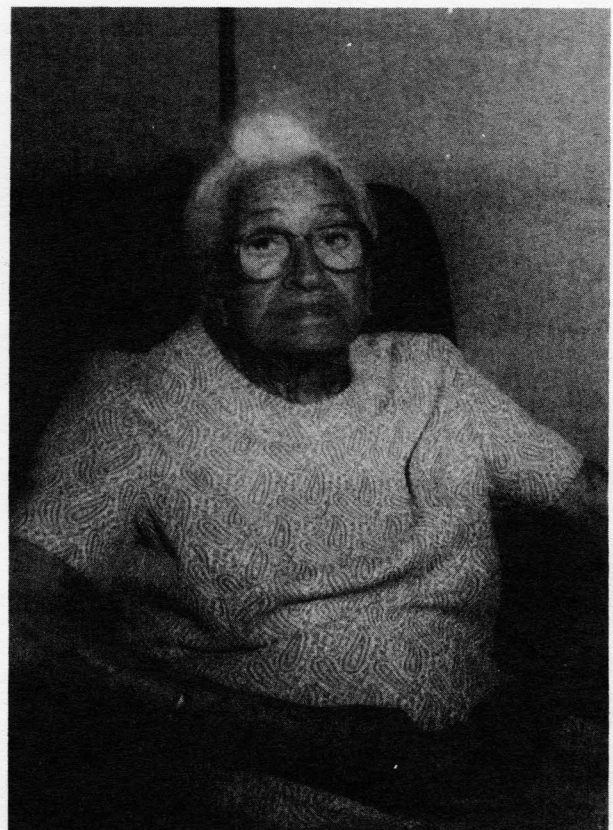
ESLEY McGRIFF



MARION JENNINGS



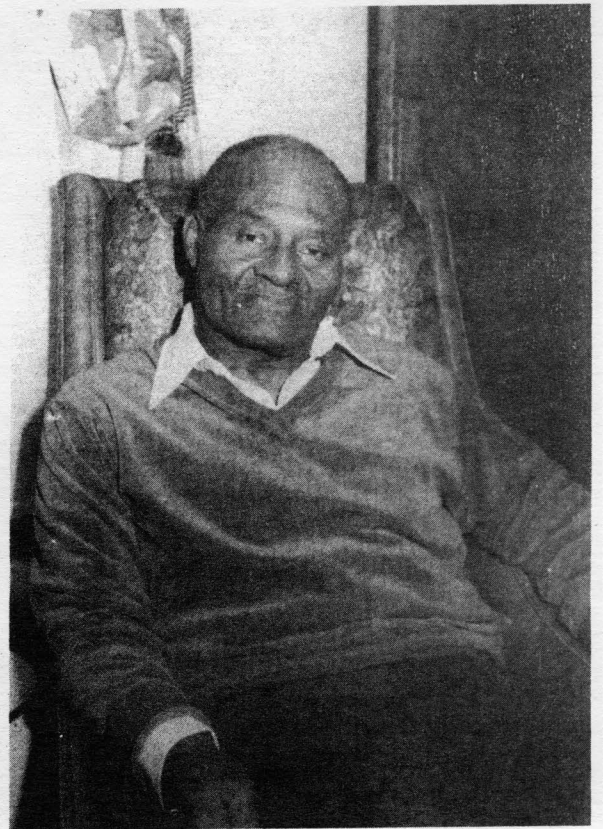
DEWEY AMOS



BESSIE EATON



JANNIE SIMS



JAMES SIMS



ROY COX



BERKLEY COX



ELLA JACKSON



INEZ HOLLEY



ARTHUR COLLINS



GLADYS BAILEY



ROBERT THOMPSON



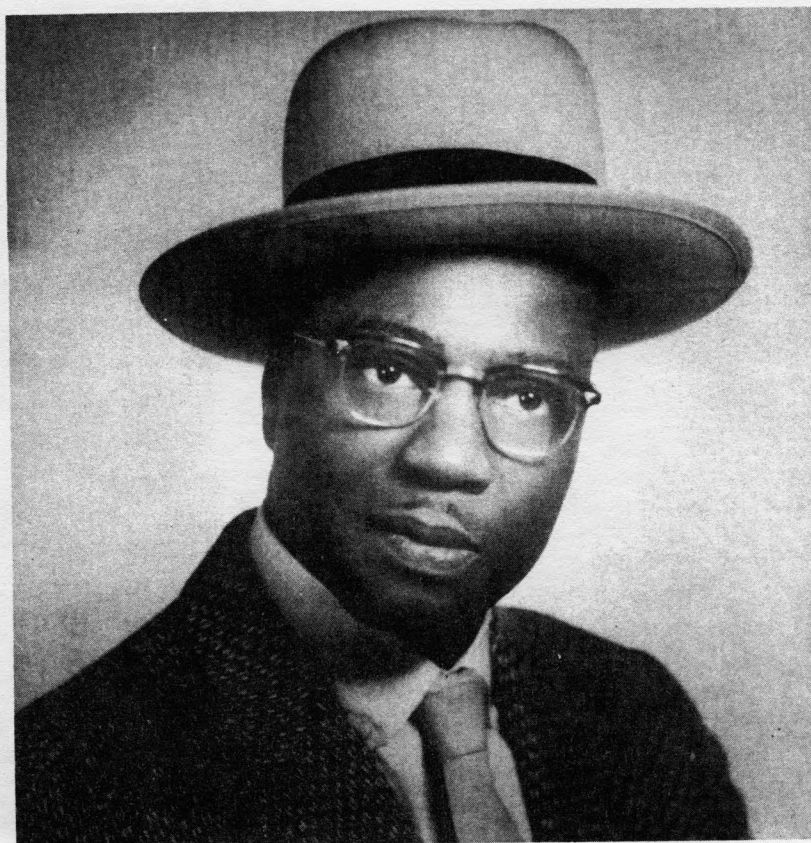
DOROTHY ALLSOP



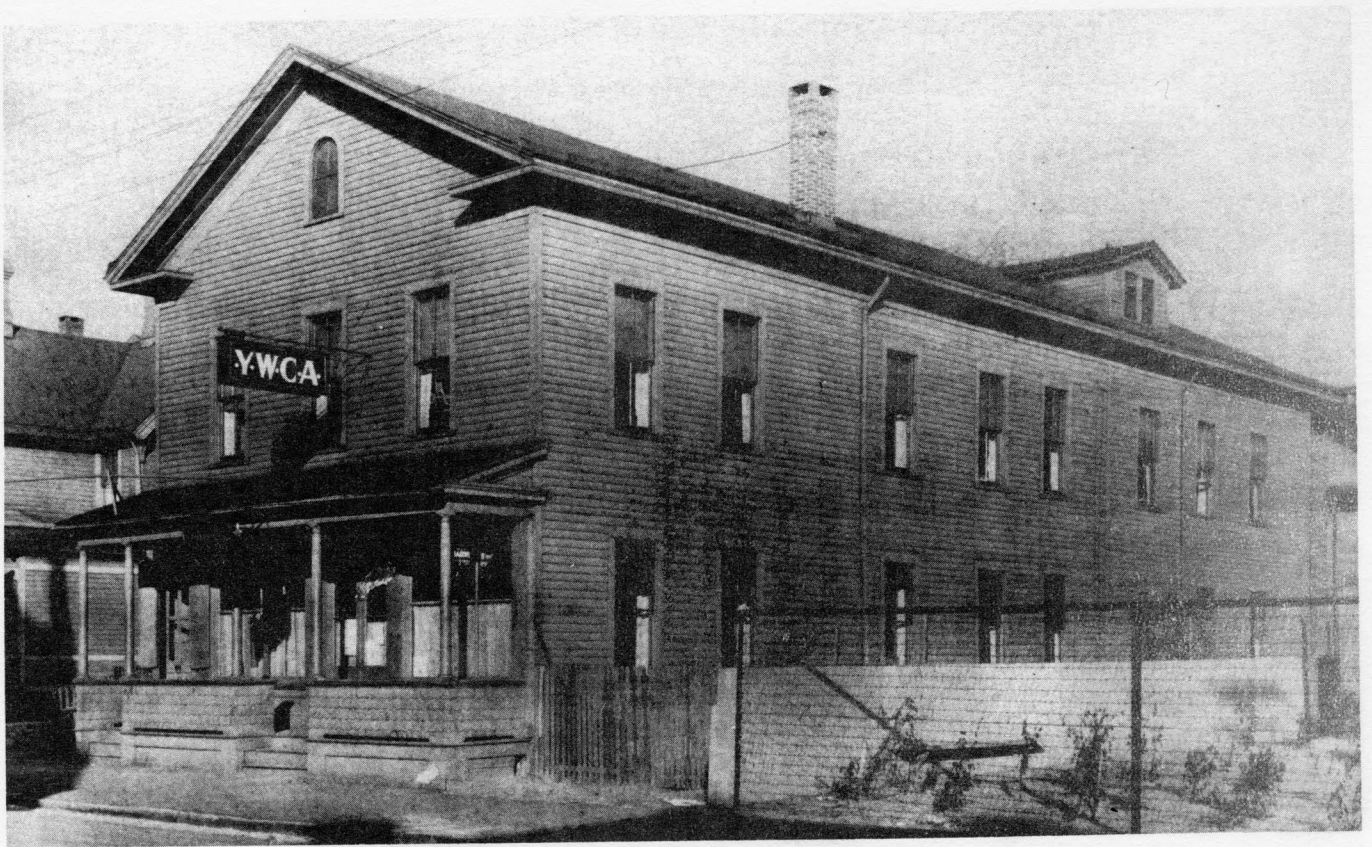
ALICE FARRAR



BESSIE FRYE with ELEANOR ROOSEVELT and REV. F. JACOBS



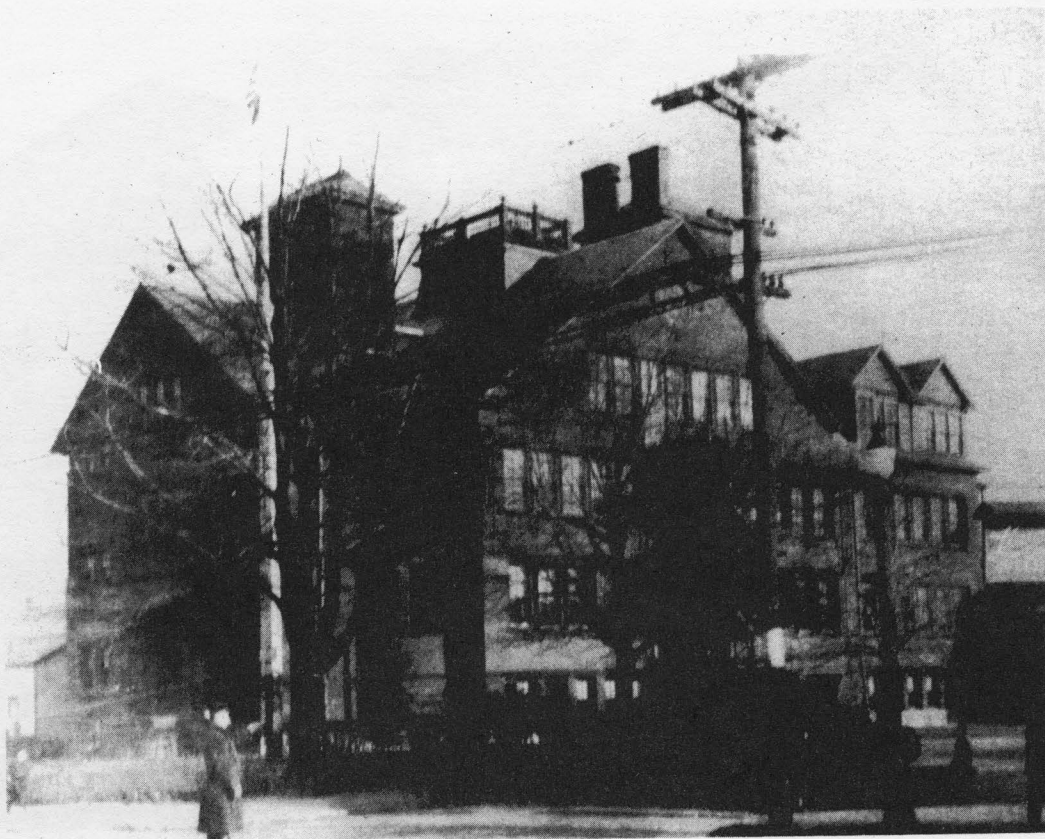
WILLIAM A. ALLEN



PHYLISS WHEATLEY BRANCH, YWCA 1928



MORTGAGE CLUB, WALTER'S MEMORIAL AME 1918



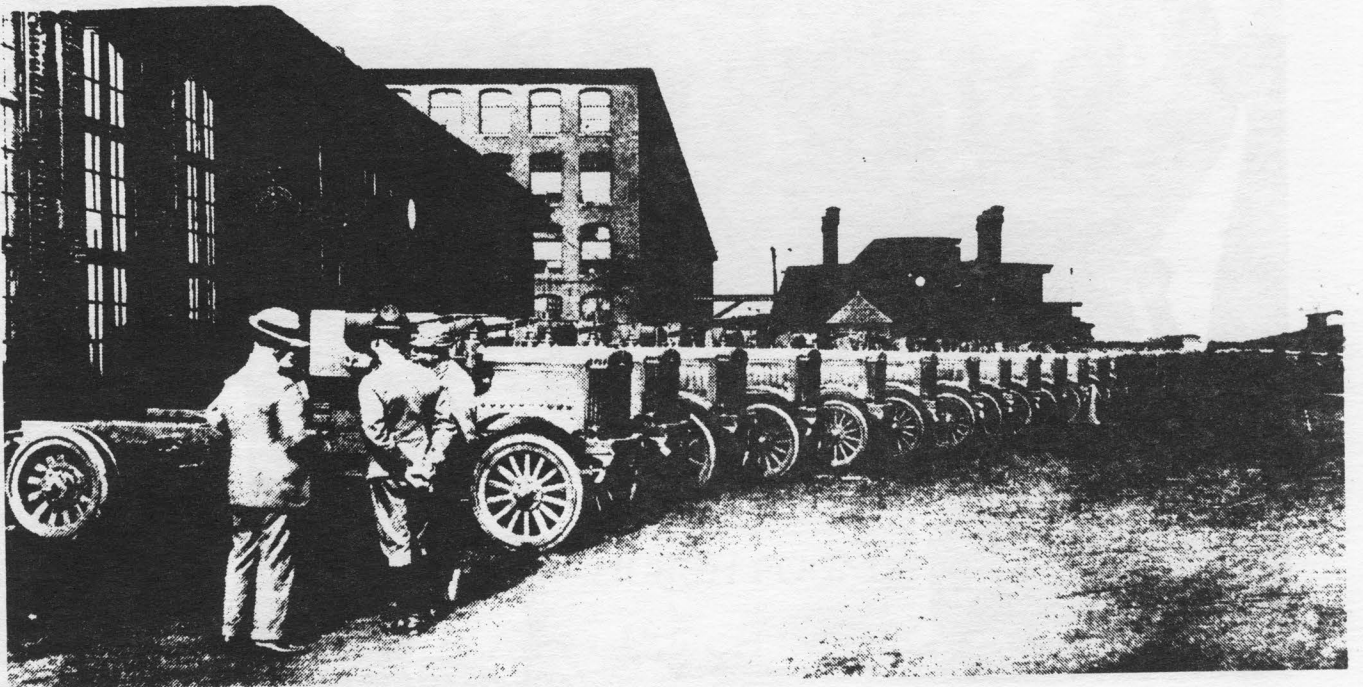
LINCOLN SCHOOL, STRATFORD AVENUE 1926



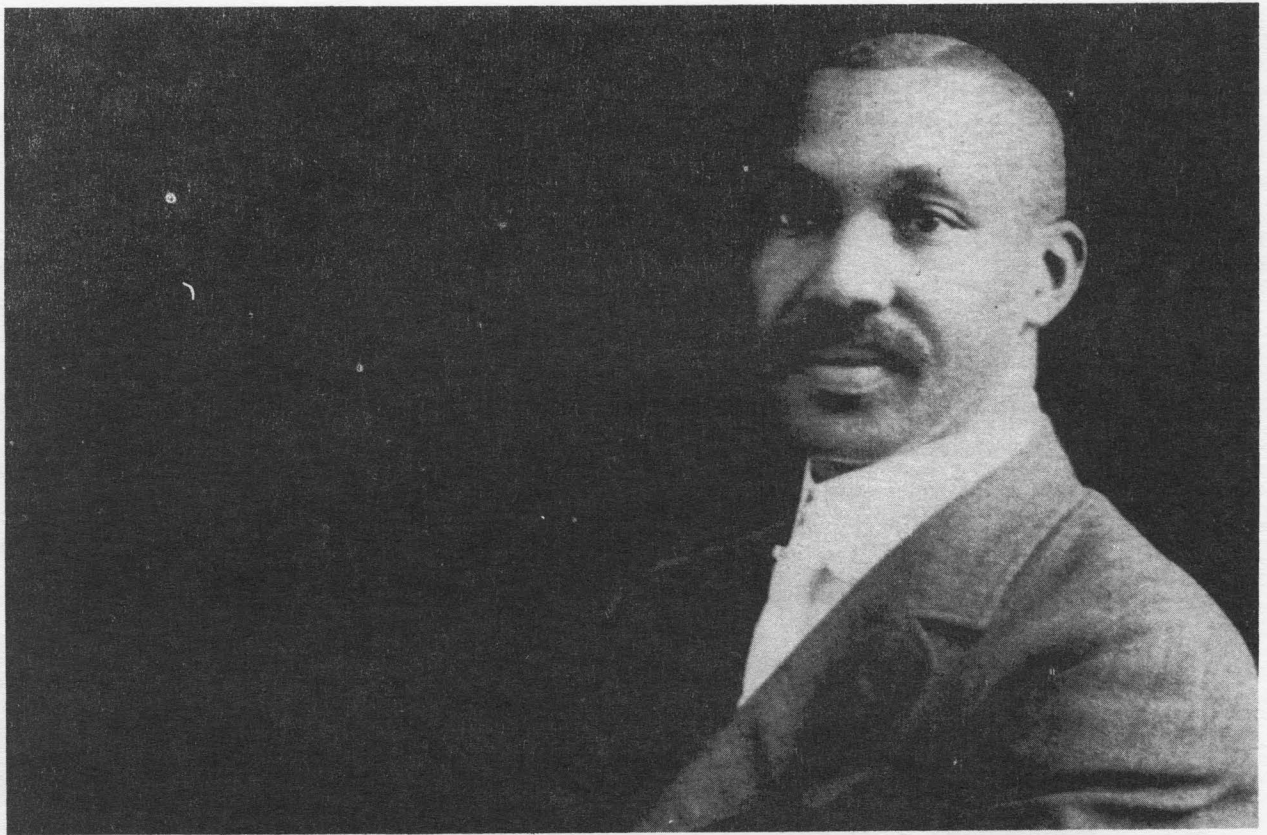
LILLIAN WHITING HAMILTON FIRST BLACK TEACHER 1920



METROPOLITAN BODY COMPANY, est. 1909



LOCOMOBILE COMPANY of AMERICA



FREDERICK ANTHONY STEVENS, FIRST BLACK POSTMAN





*BETHEL A. M. E. CHURCH FOUNDED IN 1828.
OLDEST BLACK CHURCH IN THE NORTH.*



WORLD WAR I SOLDIER WITH E. PITTS, L. HAMILTON and T. FARRINGTON



EDWARD H. STANTON AND HIS CAR

PROJECT COMMITTEE

DENISE FOSTER - BEY

SUSAN GOLSON

DAVID HICKS

GWENDOLYN JOHNSON

JAMES JOHNSON

JUANITA WRIGHT

FRANCES JUDSON, PROJECT DIRECTOR

CONSULTANTS

DR. JOHN SUTHERLAND

DAVID PALMQUIST

LOGO DESIGN BY

NANCY ROSSOMANDO

CENTRAL HIGH SCHOOL

IN-KIND SERVICES CONTRIBUTED BY

BURROUGHS LIBRARY

FUNDED BY THE CONNECTICUT HUMANITIES COUNCIL,

BRUCE FRASER, DIRECTOR

BRIDGEPORT PUBLIC LIBRARY
HISTORICAL COLLECTIONS
925 BROAD STREET
BRIDGEPORT, CT 06604